

# Eupart Open 2026



Oil Pattern Distance: **42 Feet**  
 Forward Oil Total: **13,9 mL**  
 Forward Boards Crossed: **278 Boards**

Reverse Brush Drop: **42 Feet**  
 Reverse Oil Total: **10,05 mL**  
 Reverse Boards Crossed: **201 Boards**

Oil Per Board: **50 uL**  
 Volume Oil Total: **23,95 mL**  
 Total Boards Crossed: **479 Boards**

	Start	Stop	Loads	Speed	Crossed	Start	End	Feet	T.Oil
1	2L	2R	1	18	37	0.0	0.0	0.0	1850
2	8L	8R	1	18	25	0.0	2.5	2.5	1250
3	9L	9R	2	18	46	2.5	7.6	5.1	2300
4	10L	10R	2	18	42	7.6	12.7	5.1	2100
5	11L	11R	3	18	57	12.7	20.3	7.6	2850
6	13L	13R	3	18	45	20.3	27.9	7.6	2250
7	14L	14R	2	18	26	27.9	33.0	5.1	1300
8	2L	2R	0	18	0	33.0	42.0	9.0	0

	Start	Stop	Loads	Speed	Crossed	Start	End	Feet	T.Oil
1	2L	2R	0	30	0	42.0	34.0	-8.0	0
2	13L	13R	2	18	30	34.0	28.9	-5.1	1500
3	12L	12R	3	18	51	28.9	21.3	-7.6	2550
4	11L	11R	3	18	57	21.3	13.7	-7.6	2850
5	10L	10R	3	14	63	13.7	7.8	-5.9	3150
6	2L	2R	0	14	0	7.8	0.0	-7.8	0

Conditioner:  
Type In or Select One

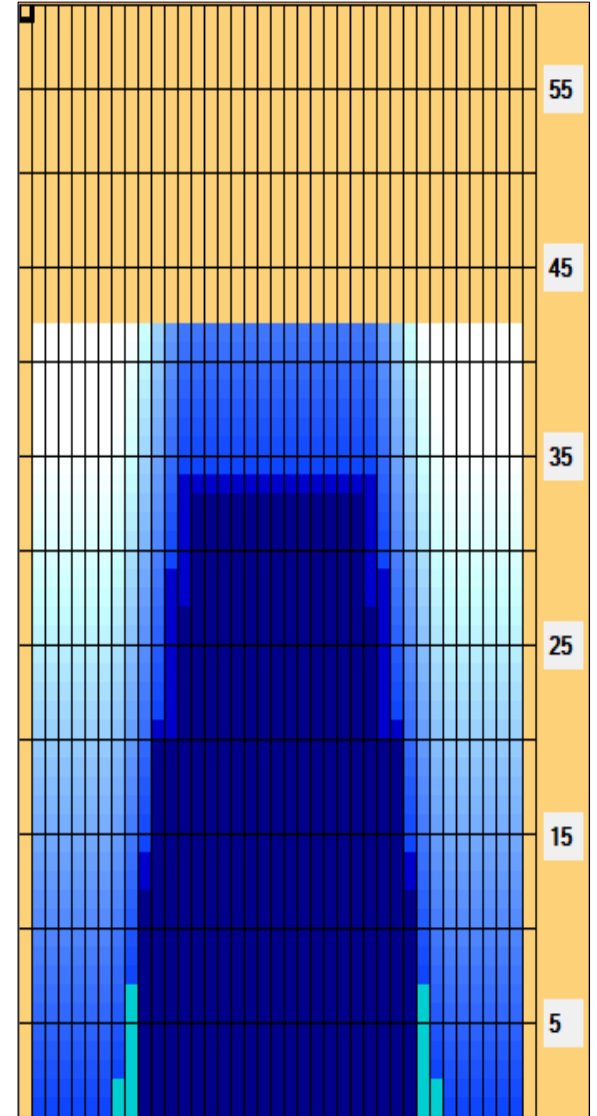
TransferType:  
Type In or Select One

Forward

Reverse

Combined

Buff



Item	3L-7L:18L-18R	8L-12L:18L-18R	13L-17L:18L-18R	18L-18R:17R-13R	18L-18R:12R-8R	18L-18R:7R-3R
Description	Outside Track:Middle	Middle Track:Middle	Inside Track:Middle	Middle: Inside Track	Middle:Middle Track	Middle:Outside Track
Track Zone Ratio	25	2,6	1,02	1,02	2,6	25

