

MÄMMITURNAUS 2024



Oil Pattern Distance: **39 Feet**
 Forward Oil Total: **13,95 mL**
 Forward Boards Crossed: **310 Boards**

Reverse Brush Drop: **39 Feet**
 Reverse Oil Total: **7,47 mL**
 Reverse Boards Crossed: **166 Boards**

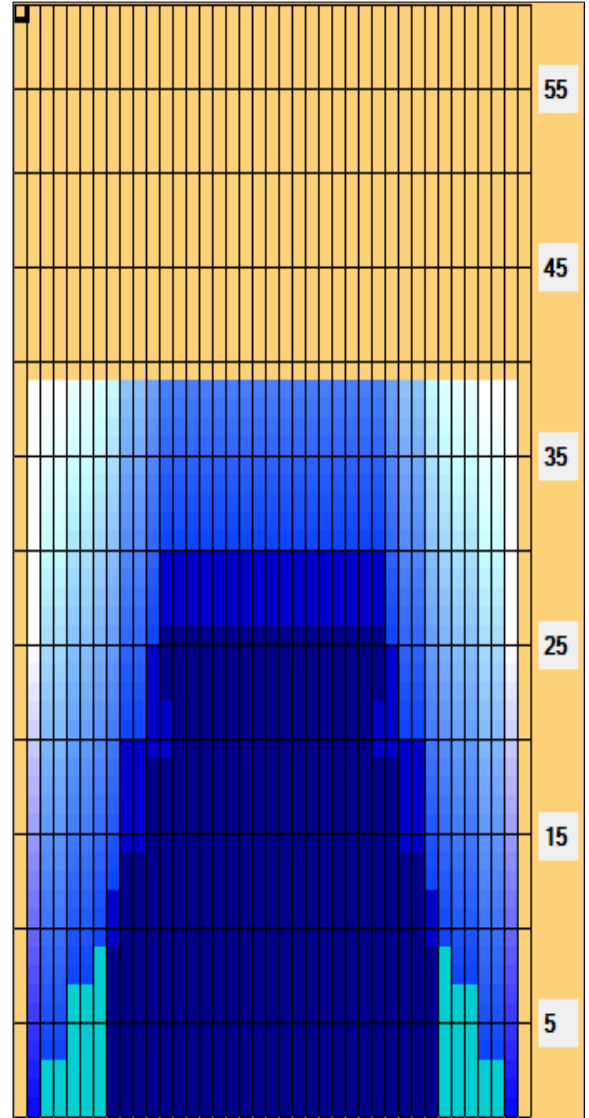
Oil Per Board: **45 uL**
 Volume Oil Total: **21,42 mL**
 Total Boards Crossed: **476 Boards**

Start	Stop	Loads	Speed	Crossed	Start	End	Feet	T.Oil
1	3L 3R	3	14	105	0.0	3.9	3.9	4725
2	5L 5R	2	14	62	3.9	7.8	3.9	2790
3	7L 7R	1	14	27	7.8	9.7	1.9	1215
4	9L 9R	2	18	46	9.7	14.8	5.1	2070
5	11L 11R	2	18	38	14.8	19.9	5.1	1710
6	13L 13R	1	22	15	19.9	23.0	3.1	675
7	12L 12R	1	26	17	23.0	26.6	3.6	765
8	2L 2R	0	26	0	26.6	39.0	12.4	0

Conditioner: Type In or Select One
 TransferType: Type In or Select One

Forward
 Reverse
 Combined
 Buff

Start	Stop	Loads	Speed	Crossed	Start	End	Feet	T.Oil
1	2L 2R	0	30	0	39.0	30.0	-9.0	0
2	12L 12R	2	18	34	30.0	24.9	-5.1	1530
3	11L 11R	2	18	38	24.9	19.8	-5.1	1710
4	9L 9R	3	18	69	19.8	12.2	-7.6	3105
5	8L 8R	1	18	25	12.2	9.7	-2.5	1125
6	2L 2R	0	14	0	9.7	0.0	-9.7	0



Item	3L-7L:18L-18R	8L-12L:18L-18R	13L-17L:18L-18R	18L-18R:17R-13R	18L-18R:12R-8R	18L-18R:7R-3R
Description	Outside Track:Middle	Middle Track:Middle	Inside Track:Middle	Middle: Inside Track	Middle:Middle Track	Middle:Outside Track
Track Zone Ratio	4,55	1,52	1	1	1,52	4,55

