

Talviturnaus-21



Oil Pattern Distance: 39 Feet **Reverse Brush Drop:** 40 Feet **Oil Per Board:** Multiple uL
Forward Oil Total: 16.92 mL **Reverse Oil Total:** 5.68 mL **Volume Oil Total:** 22.6 mL
Forward Boards Crossed: 423 Boards **Reverse Boards Crossed:** 142 Boards **Total Boards Crossed:** 565 Boards

Start	Stop	Loads	Mics	Speed	Crossed	Start	End	Feet	T.Oil
1	2L 2R	5	40	14	185	0.0	7.9	7.9	7400
2	5L 5R	1	40	14	31	7.9	9.8	1.9	1240
3	6L 6R	2	40	14	58	9.8	13.7	3.9	2320
4	8L 8R	3	40	14	75	13.7	19.6	5.9	3000
5	10L 10R	2	40	14	42	19.6	23.5	3.9	1680
6	12L 12R	1	40	18	17	23.5	26.0	2.5	680
7	13L 13R	1	40	18	15	26.0	28.5	2.5	600
8	2L 2R	0	40	22	0	28.5	34.0	5.5	0
9	2L 2R	0	40	26	0	34.0	39.0	5.0	0

Forward Reverse More

Start	Stop	Loads	Mics	Speed	Crossed	Start	End	Feet	T.Oil
1	2L 2R	0	40	30	0	39.0	30.0	-9.0	0
2	12L 12R	1	40	22	17	30.0	26.9	-3.1	680
3	11L 11R	2	40	22	38	26.9	20.7	-6.2	1520
4	9L 9R	1	40	18	23	20.7	18.2	-2.5	920
5	7L 7R	1	40	18	27	18.2	15.7	-2.5	1080
6	2L 2R	1	40	14	37	15.7	13.8	-1.9	1480
7	2L 2R	0	40	14	0	13.8	0.0	-13.8	0

Forward Reverse More

Conditioner:
Type In or Select One

TransferType:
Type In or Select One

Forward



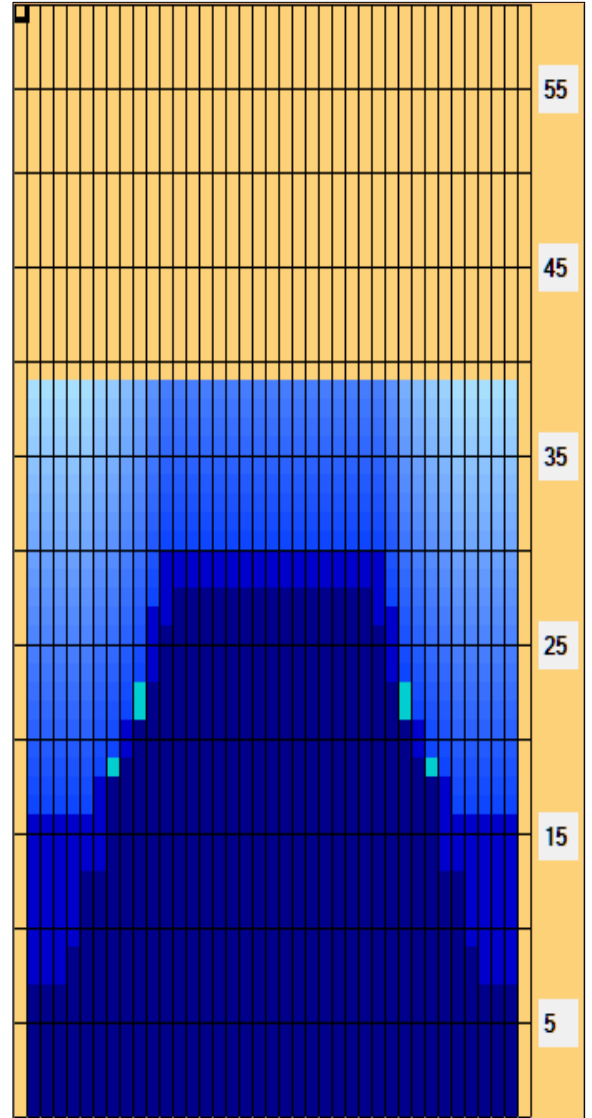
Reverse



Combined



Buff



Kliffaa hei1

Item	3L-7L:18L-18R	8L-12L:18L-18R	13L-17L:18L-18R	18L-18R:17R-13R	18L-18R:12R-8R	18L-18R:7R-3R
Description	Outside Track:Middle	Middle Track:Middle	Inside Track:Middle	Middle: Inside Track	Middle:Middle Track	Middle:Outside Track
Track Zone Ratio	2.76	1.3	1	1	1.3	2.76

