

Oil Pattern Distance:	41 Feet	Reverse Brush Drop:	35 Feet	Oil Per Board:	Multiple uL
Forward Oil Total:	11.16 mL	Reverse Oil Total:	9.68 mL	Volume Oil Total:	20.84 mL
Forward Boards Crossed:	279 Boards	Reverse Boards Crossed:	242 Boards	Total Boards Crossed:	521 Boards

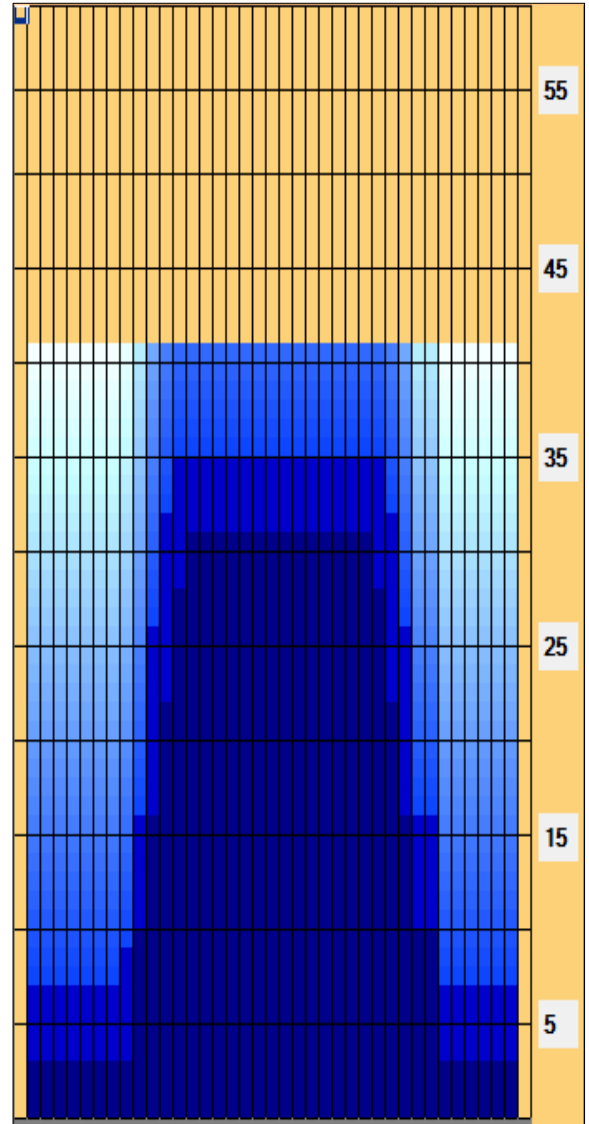
	Start	Stop	Loads	Mics	Speed	Crossed	Start	End	Feet	T.Oil
1	2L	2R	3	40	14	111	0.0	3.9	3.9	4440
2	10L	8R	2	40	22	46	3.9	10.1	6.2	1840
3	11L	10R	2	40	22	40	10.1	16.3	6.2	1600
4	12L	11R	2	40	22	36	16.3	22.5	6.2	1440
5	13L	12R	2	40	22	32	22.5	28.7	6.2	1280
6	14L	13R	1	40	22	14	28.7	31.8	3.1	560
7	2L	2R	0	40	22	0	31.8	41.0	9.2	0

Conditioner:
Type In or Select One

TransferType:
Type In or Select One

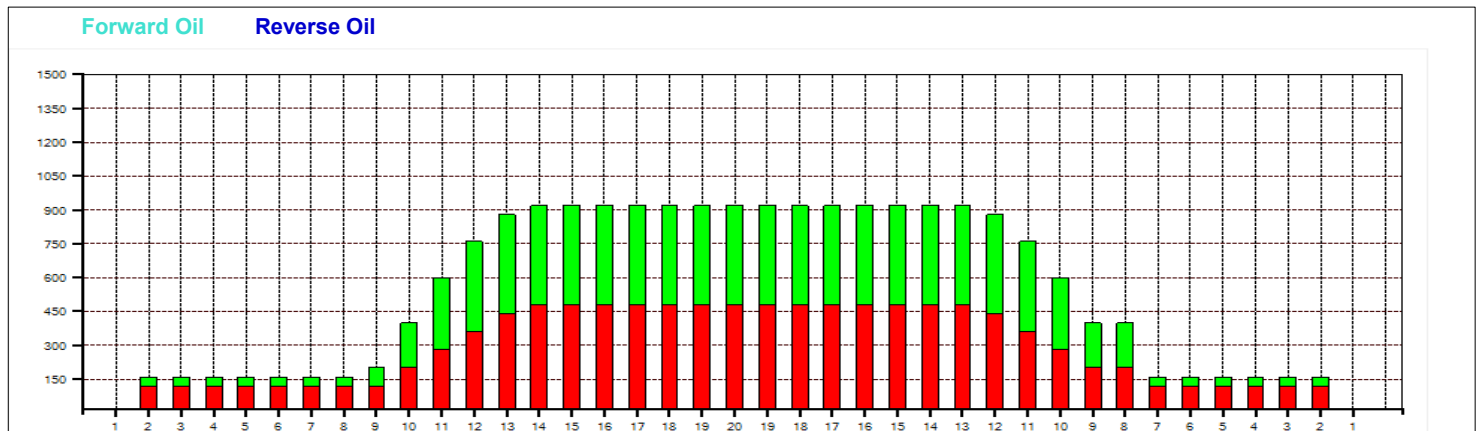
- Forward
- Reverse
- Combined
- Buff

	Start	Stop	Loads	Mics	Speed	Crossed	Start	End	Feet	T.Oil
1	2L	2R	0	40	30	0	41.0	35.0	-6.0	0
2	13L	12R	1	40	22	16	35.0	31.9	-3.1	640
3	12L	11R	2	40	22	36	31.9	25.7	-6.2	1440
4	11L	10R	3	40	22	60	25.7	16.4	-9.3	2400
5	10L	8R	3	40	18	69	16.4	8.8	-7.6	2760
6	9L	8R	1	40	14	24	8.8	6.9	-1.9	960
7	2L	2R	1	40	14	37	6.9	5.0	-1.9	1480
8	2L	2R	0	40	14	0	5.0	0.0	-5.0	0



This Pattern Up Loaded From Slot # 29 In Lane Machine On 11.12.2018 15:06

Item	3L-7L:18L-18R	8L-12L:18L-18R	13L-17L:18L-18R	18L-18R:17R-13R	18L-18R:12R-8R	18L-18R:7R-3R
Description	Outside Track:Middle	Middle Track:Middle	Inside Track:Middle	Middle: Inside Track	Middle:Middle Track	Middle:Outside Track
Track Zone Ratio	5.75	2.17	1.01	1	1.51	5.75



Talvikisa □ USBC



Oil Pattern Distance:	41 Feet	Reverse Brush Drop:	35 Feet	Oil Per Board:	Multiple uL
Forward Oil Total:	11.16 mL	Reverse Oil Total:	9.68 mL	Volume Oil Total:	20.84 mL
Forward Boards Crossed:	279 Boards	Reverse Boards Crossed:	242 Boards	Total Boards Crossed:	521 Boards
