

Ruska-Turnaus-18



Oil Pattern Distance: 35 Feet **Reverse Brush Drop:** 35 Feet **Oil Per Board:** 40 uL
Forward Oil Total: 11.4 mL **Reverse Oil Total:** 9.92 mL **Volume Oil Total:** 21.32 mL
Forward Boards Crossed: 285 Boards **Reverse Boards Crossed:** 248 Boards **Total Boards Crossed:** 533 Boards

	Start	Stop	Loads	Speed	Crossed	Start	End	Feet	T.Oil
1	2L	2R	2	10	74	0.0	1.4	1.4	2960
2	4L	4R	1	14	33	1.4	3.3	1.9	1320
3	5L	5R	3	18	93	3.3	10.9	7.6	3720
4	6L	6R	2	18	58	10.9	16.0	5.1	2320
5	7L	7R	1	14	27	16.0	17.9	1.9	1080
6	2L	2R	0	18	0	17.9	29.0	11.1	0
7	2L	2R	0	26	0	29.0	32.0	3.0	0
8	2L	2R	0	30	0	32.0	35.0	3.0	0

◀ ▶ ▶▶ Forward Reverse More

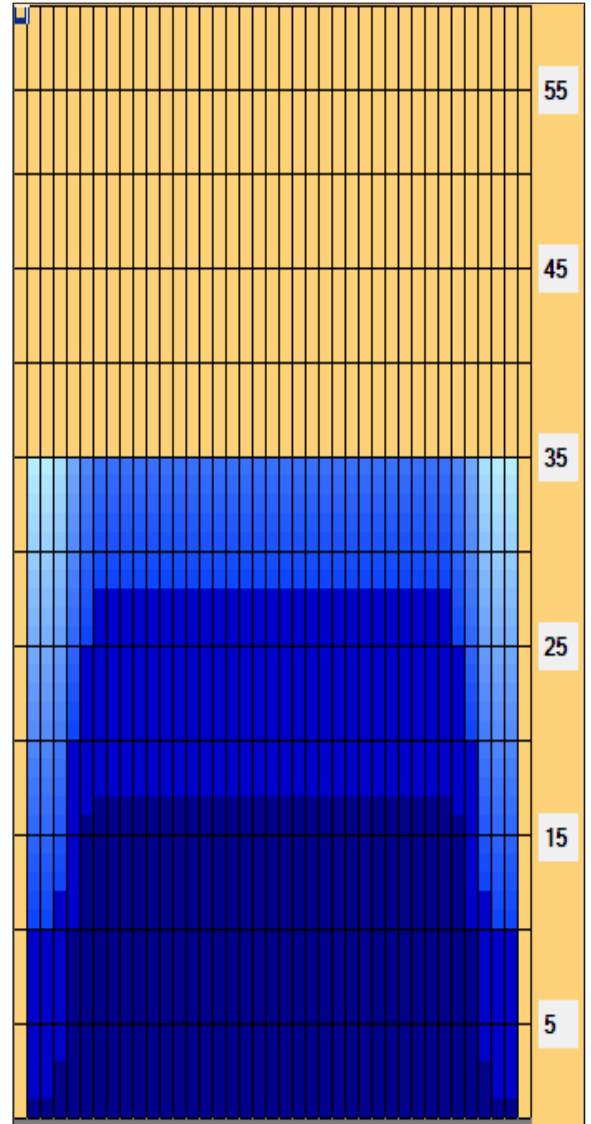
	Start	Stop	Loads	Speed	Crossed	Start	End	Feet	T.Oil
1	2L	2R	0	22	0	35.0	28.0	-7.0	0
2	7L	7R	1	22	27	28.0	24.9	-3.1	1080
3	6L	6R	2	18	58	24.9	19.8	-5.1	2320
4	5L	5R	3	18	93	19.8	12.2	-7.6	3720
5	4L	4R	1	18	33	12.2	9.7	-2.5	1320
6	2L	2R	1	18	37	9.7	7.2	-2.5	1480
7	2L	2R	0	14	0	7.2	0.0	-7.2	0

◀ ▶ ▶▶ Forward Reverse More

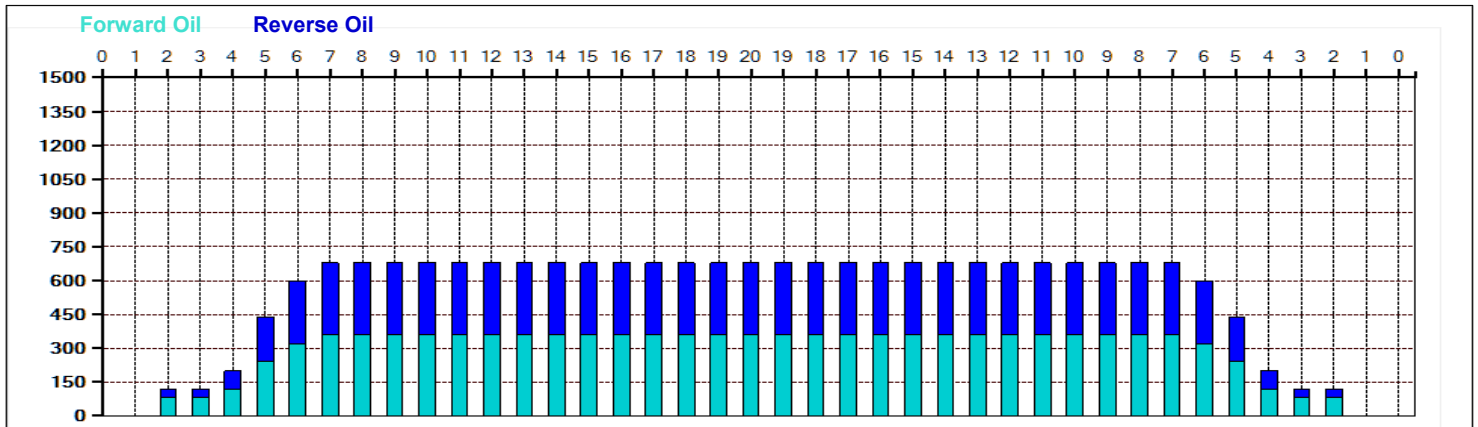
Conditioner:
Type In or Select One

TransferType:
Type In or Select One

- Forward
- Reverse
- Combined
- Buff



Item Description	3L-7L:18L-18R Outside Track:Middle	8L-12L:18L-18R Middle Track:Middle	13L-17L:18L-18R Inside Track:Middle	18L-18R:17R-13R Middle: Inside Track	18L-18R:12R-8R Middle:Middle Track	18L-18R:7R-3R Middle:Outside Track
Track Zone Ratio	1.67	1	1	1	1	1.67



Ruska-Turnaus-18



Oil Pattern Distance:	35 Feet	Reverse Brush Drop:	35 Feet	Oil Per Board:	40 uL
Forward Oil Total:	11.4 mL	Reverse Oil Total:	9.92 mL	Volume Oil Total:	21.32 mL
Forward Boards Crossed:	285 Boards	Reverse Boards Crossed:	248 Boards	Total Boards Crossed:	533 Boards
